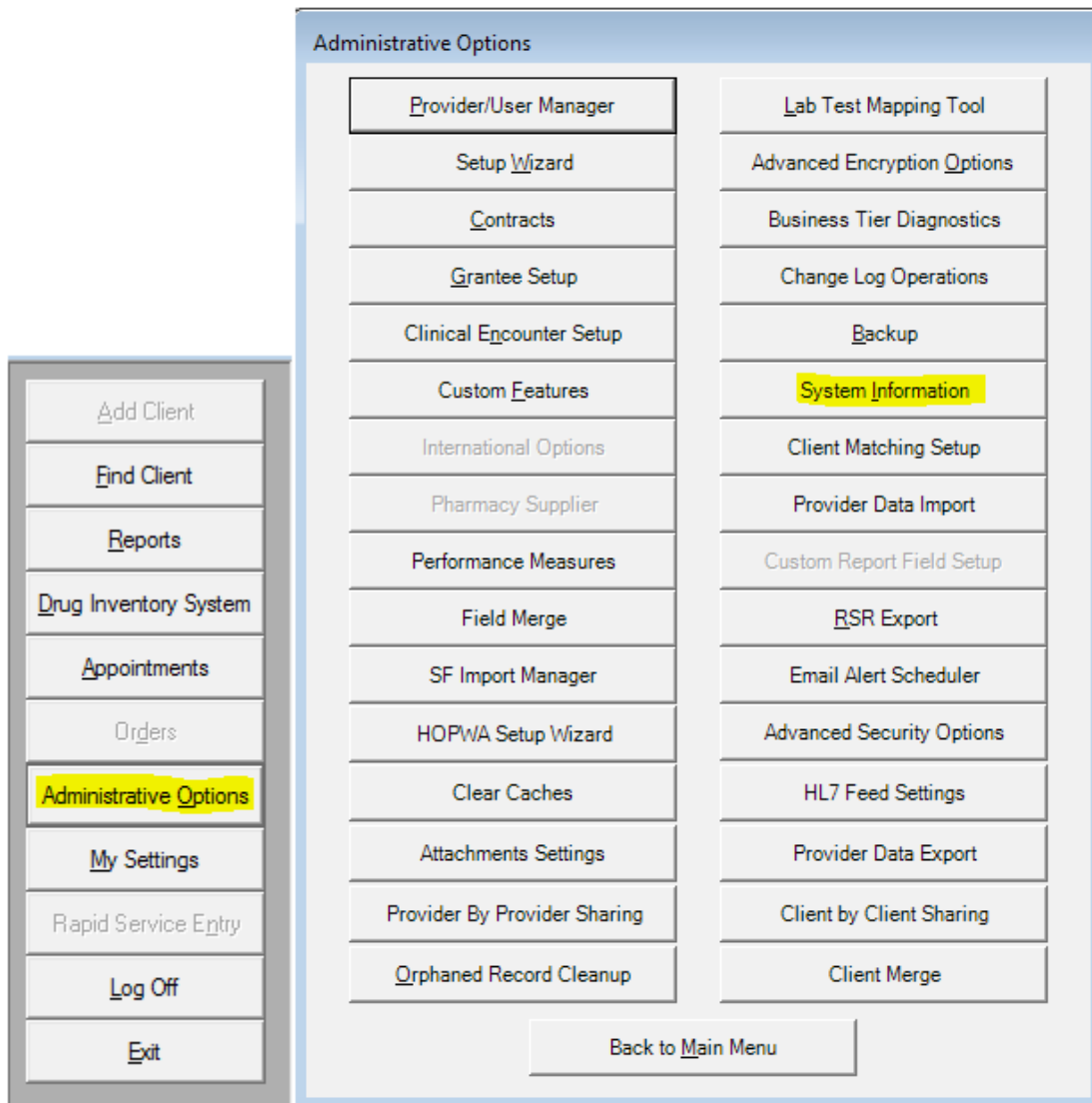


CAREWare has *Advanced Indexing Options* as of build 906. In addition to the option to reindex, using the *Reindex Now* button, users can fine tune settings to manage the database. The *Advanced Indexing Options* include a report displaying potential changes to the database and a function to complete changes that will improve the function of the database.

1. Click *Administrative Options*.
2. Click *System Information*.



- Auto Close – When the last user exits the database, the database is shut down cleanly and resources are freed. (Recommended to remain off as this may degrade performance.)
- Auto Shrink – If this setting is set to *ON*, SQL Server removes unused space from the database on a periodic basis. (Recommended to remain off as this may degrade performance.)
- Auto-Manage Indexes – This enables the business tier to periodically check for missing indexes and automatically create them, resolving performance issues and errors.

Advanced Database Optimization Options

This section can be used to optimize database settings and create or modify indexes in order to improve the database's efficiency.

SQL Server Setting: Auto Close ON OFF (Recommended)

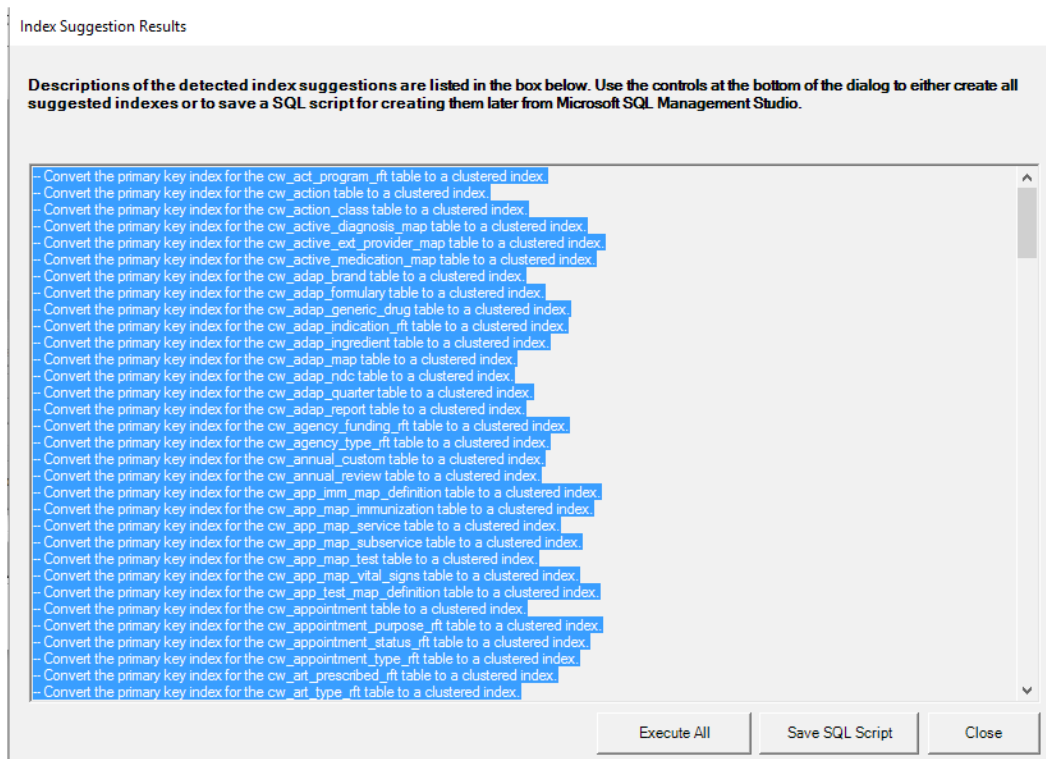
SQL Server Setting: Auto Shrink ON OFF (Recommended)

CAREWare Setting: Auto-Manage Indexes ON OFF

[View Current Index Suggestions](#) [Close](#)

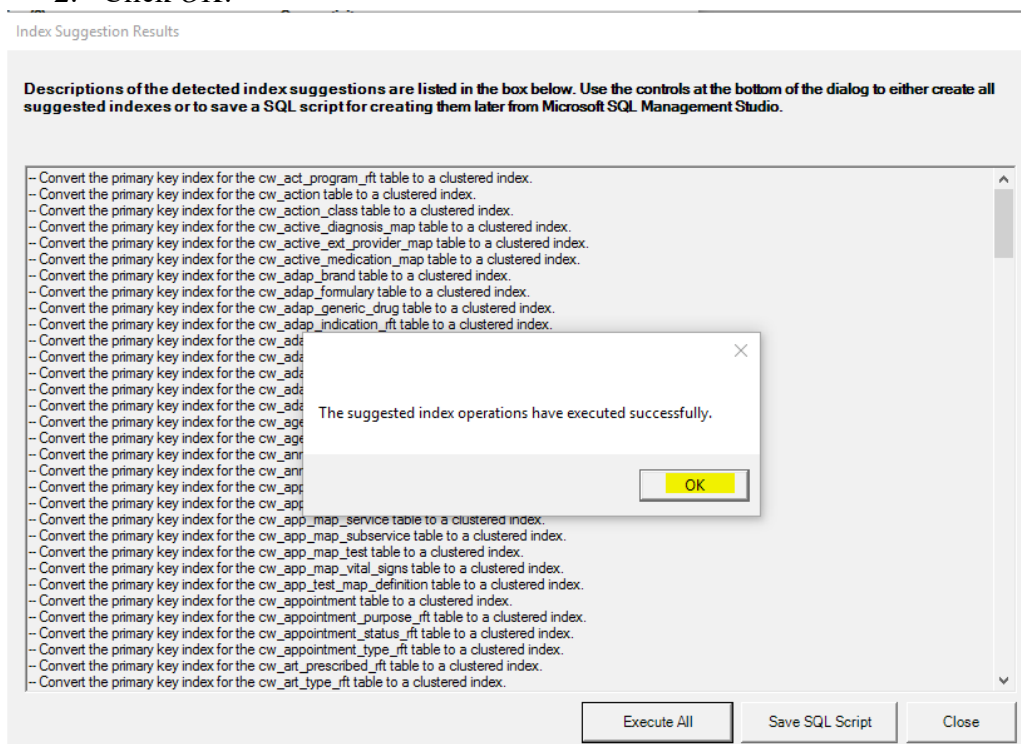
4. Click *View Current Index Suggestions*.
5. Enter the SA password for the database.
6. Click *Continue*.

The *Index Suggestion Results* includes a list of changes to the database that can improve performance. The changes can be completed by clicking *Execute All* or a SQL Script can be saved, allowing the user to run some of the index changes or review for running the script later.



To complete the changes to the indexes:

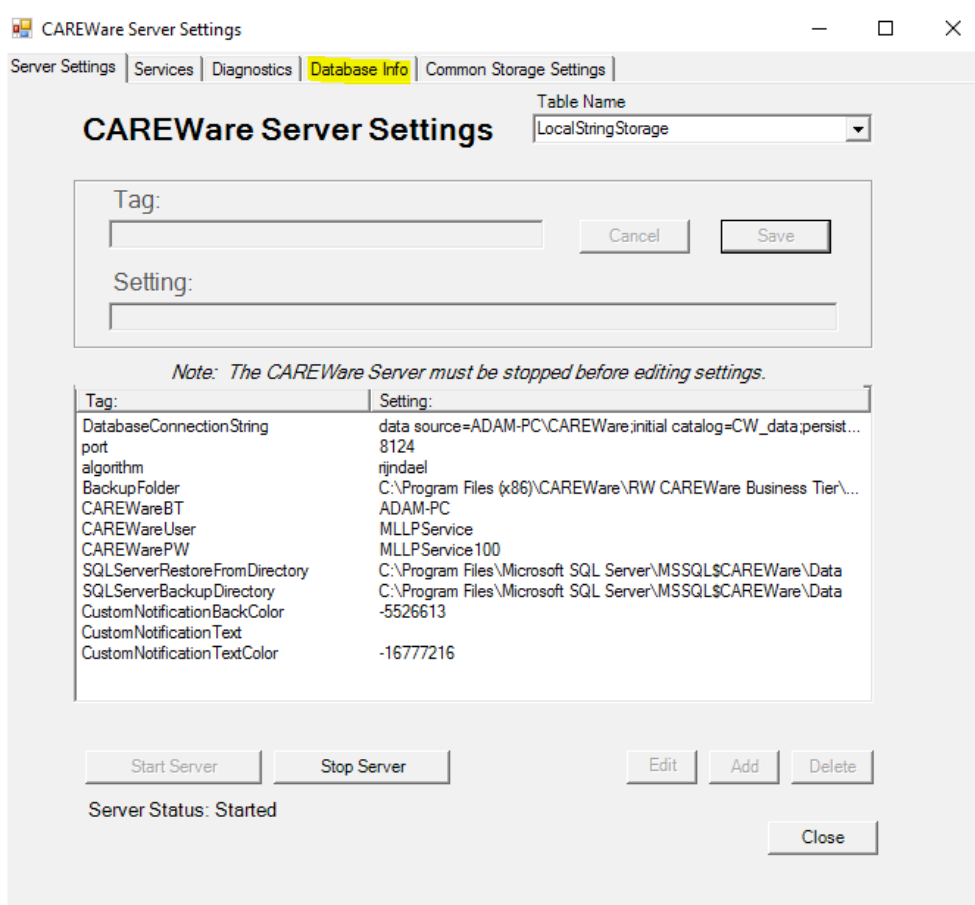
1. Click *Execute All*.
2. Click *OK*.



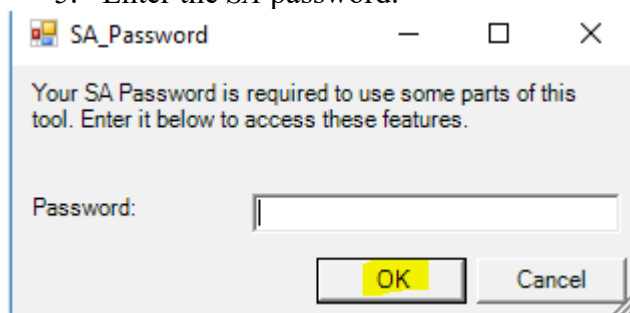
Click *Save SQL Script* to save the script for review or completing the changes later.

Advanced Indexing Options can also be completed on the business tier server using the CW Admin Utility.

1. Go to *C:\Program Files (x86)\CAREWare\RW CAREWare Business Tier*.
2. Right click *CW Admin*.
3. Click *Run as Administrator*.
4. Click *Database Info*.



5. Enter the *SA* password.



6. Click *OK*.
7. Click *Advanced Optimization Options*.

